

## SUITE: Multifunctional Light Fitting

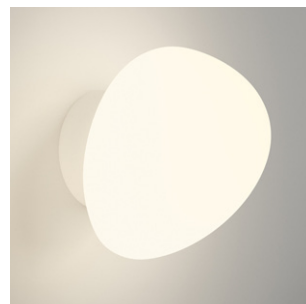
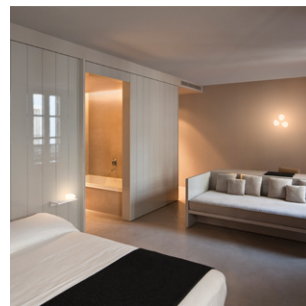


Object and light source become one through this lamp fitting which as well as providing light also functions as a piece of furniture. The **SUITE** collection designed by **Jordi Vilardell and Meritxell Vidal**, establishes a new relationship between light fitting and the way people inhabit space, inviting interaction through the senses and use.

Fitted with LED lights hidden within the supporting structure the light is warm and comforting, appearing almost unexpectedly making for an agreeable surprise.

**SUITE** integrates an additional reading light in the form of a classic shaded light fitting. **SUITE** also includes another option, an organic shaped illuminated stone that compliments the indirect light source and creates a cozy ambient lighting effect.

Both the rectangular or spherical shelf version of this collection combines perfectly with any interior based on its logical rational design. Among its many applications, the rectangular version with the built-in reading light is ideal for use in bedrooms as a bedside nightstand.





**SUITE** is the ideal light fitting for those laid back and relaxed moments predicated on its fresh take on and reinterpretation of the traditional side table and shelf with table lamp.

For the lamp standard, wall and table versions **SUITE** is composed of several vertical light planes set at different heights and alignments creating a practical piece of furniture providing useful surfaces to keep day to day objects.

With the addition of a USB connection for charging mobile phones **SUITE** manages to perfectly combine a light fitting with a useful furniture accessory for the home.

The collection is available in different finishes; chocolate brown, white and mink for the reading light version.



**Brand:** Vibia

**Collection:** Suite

**Designer:** Jordi Vilardell and Meritxell Vidal

**Finish:** Dark brown or white matt lacquer

**Material:** glass or polycarbonate diffuser

**Installation:** surface

**Light source:** LED STRIP 24V 1.63W

**Reading light:** LED 3.7W 350mA

#### About Vibia

Founded in 1987, VIBIA is a design-oriented lighting manufacturer based in Barcelona. The company operates in more than 80 countries around the world, including a subsidiary in the United States. VIBIA's mission is to provide the right solution, with a unique range of products that inspires the creative abilities of architects, interior and lighting design professionals.

[www.vibia.com](http://www.vibia.com)

Follow us on our [Blog](#), [Facebook](#), [Twitter](#), [Pinterest](#) and [Youtube](#)

#### For press enquiries please contact:

SmartDeco Francesca Biserni - [francesca@smartdeco.es](mailto:francesca@smartdeco.es) Vibia - [vibia@vibia.com](mailto:vibia@vibia.com)